

Bethany House of Northern Virginia, Inc
Demographics Report
FY 2007-2008

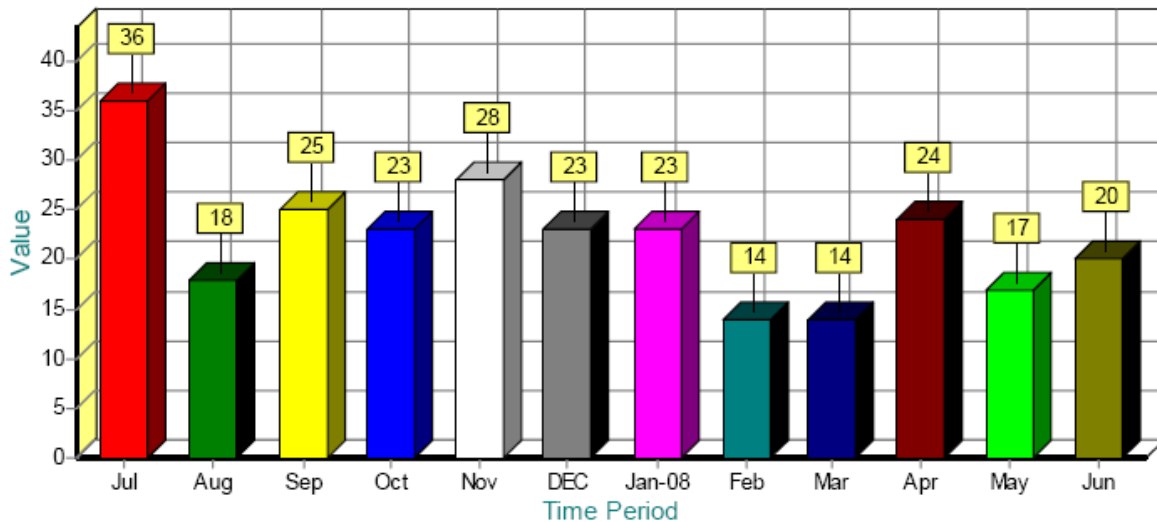
Contents

- Hotline
- Intake
- Shelter and Transitional Housing
- Bed Nights (Shelter and Transitional)
- Departures
- Summary

Hotline Calls by Month

Month	# of calls	Anonymous Calls	Schedule for Intake Interviews
July	30	6	5
August	15	3	5
September	21	4	4
October	22	1	10
November	25	3	8
December	18	5	8
January	19	4	4
February	12	2	3
March	14	0	1
April	24	0	3
May	15	2	2
June	18	2	4
Total	233	32	57

Count by Month

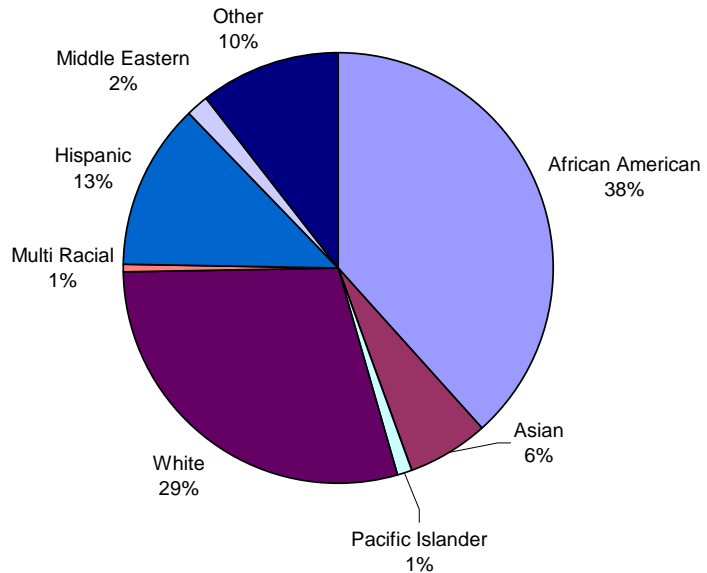


Call Type		%
Crisis call	85	29.6%
Information referral	181	63.1%
Advocacy	21	7.3%
Counseling	0	
Total	287	100.0%

Calls by shift		%
Before 8A.M.	3	1.1%
8AM to 3:59PM	223	84.2%
After 4PM	39	14.7%
Total	265	100.0%

Race and Ethnicity

African American	100
Asian	16
Native American	0
Pacific Islander	3
White	76
Multi Racial	1
Hispanic	33
Middle Eastern	4
Other	27
Total	260



Age		%
Under 18	5	1.7%
18-19	6	2.3%
20-29	80	30.8%
30-39	83	32.0%
40-49	59	22.7%
50-59	20	7.6%
60 and over	8	2.9%
Total	260	100.0%

Average age: 34.7

310 children reported as dependents

Marital Status		%
Married	57	35.2
Single	72	44.4
Divorce	11	7
Separated	22	13.9

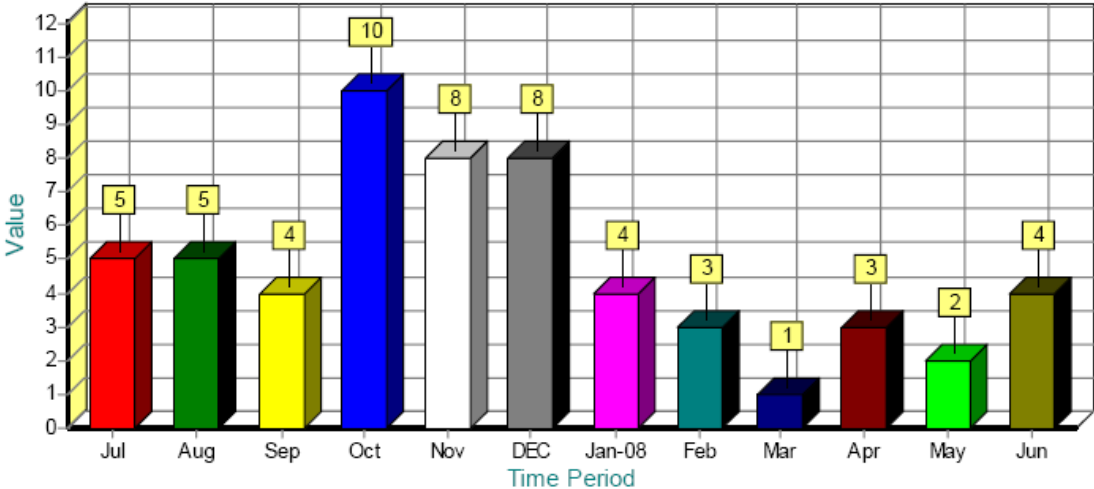
% based on 162 records where marital status was entered

County	
Alexandria	8
Arlington	4
DC	2
Fairfax	82
Falls Church	1
Loudoun	6
Montgomery	1
Prince George	2
Prince William	7
Other	13
	126

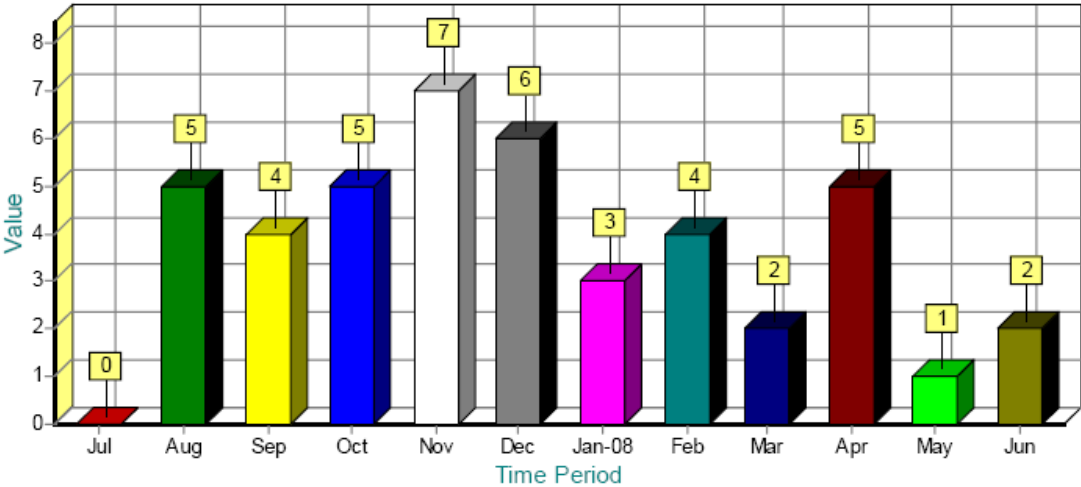
Based on 124 records where information was provided

Referrals provided	
Financial Emergency services	4
Homeless services	19
Legal services	10
Maternity	3
Mental health/counseling	9
Outreach counseling	3
Protection order	2
Other DV Shelters	46
Our DV Shelter	18
Homeless Shelter	31
Support group	6
Safety plan	3
Other services	11

Intake Appointments Scheduled by Month

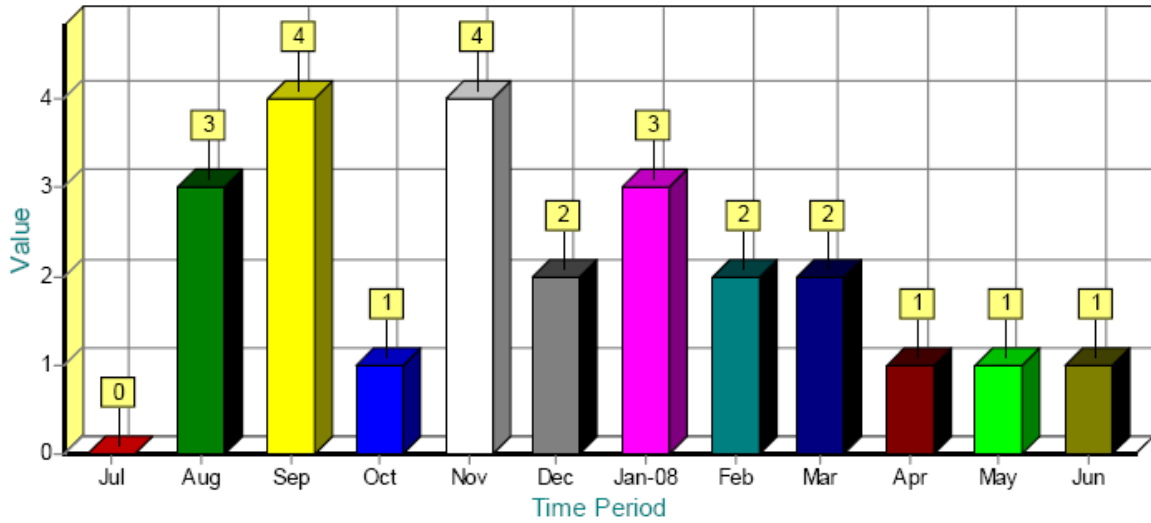


Intake Interviews by Month



A total of 57 intake interviews were scheduled during last fiscal year and 44 were actually made. 23 Interviews resulted in shelter intakes.

Shelter Intakes (households) by Month



- 23 new families moving in to Bethany House Shelters, one family with two shelter entrances, giving a total of 24 intakes.

			Not Hispanic or Latino		Hispanic or Latino	
Black or African American	18	40.9%	18	51.4%	0	0.0%
Asian	0	0.0%	0	0.0%	0	0.0%
Native American	0	0.0%	0	0.0%	0	0.0%
Pacific Islander	2	4.5%	2	5.7%	0	0.0%
White	13	29.5%	12	34.3%	1	11.1%
Multi-Racial	8	18.2%	0	0.0%	8	88.9%
Middle Eastern	2	4.5%	2	5.7%	0	0.0%
Other	1	2.3%	1	2.9%	0	0.0%
Unknown	0	0.0%	0	0.0%	0	0.0%
Total	44	100.0%	35	100.0%	9	100%

Shelter and Transitional Housing

On-going clients - from previous FY 06-07

Shelter Clients	
Adults	7
Children	13
Total	20

Transitional Housing	
Adults	4
Child	1
Total	5

New Clients - FY 07-08

Shelter Clients	
Adults	22
Children	31
Total	53

Transitional Housing	
Adults	4
Child	0
Total	4

- 3 Clients moved from Shelter to Transitional living during this fiscal year.

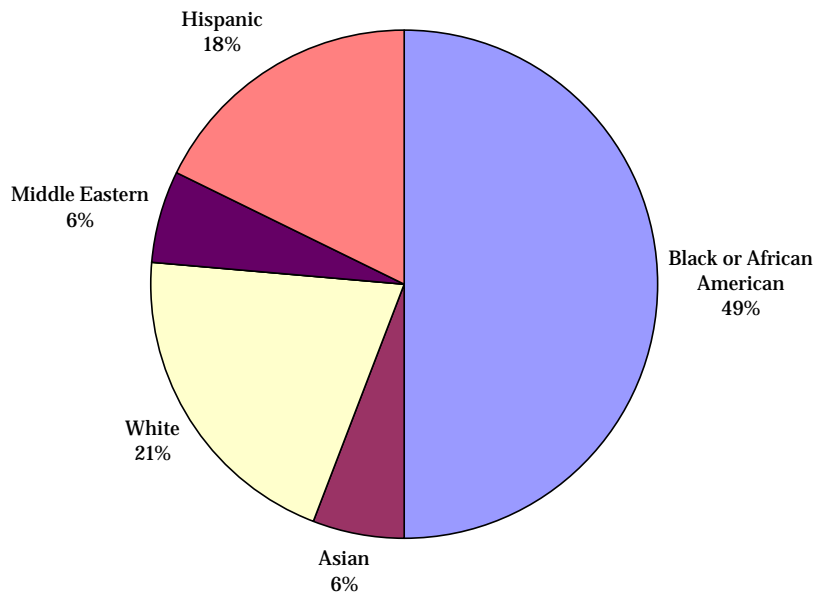
Total clients served during FY 07-08

Shelter Clients	
Adults	29
Children	43
Total	72

Transitional Housing	
Adults	8
Child	1
Total	9

Shelter & Transitional Living Clients Demographics (Households)

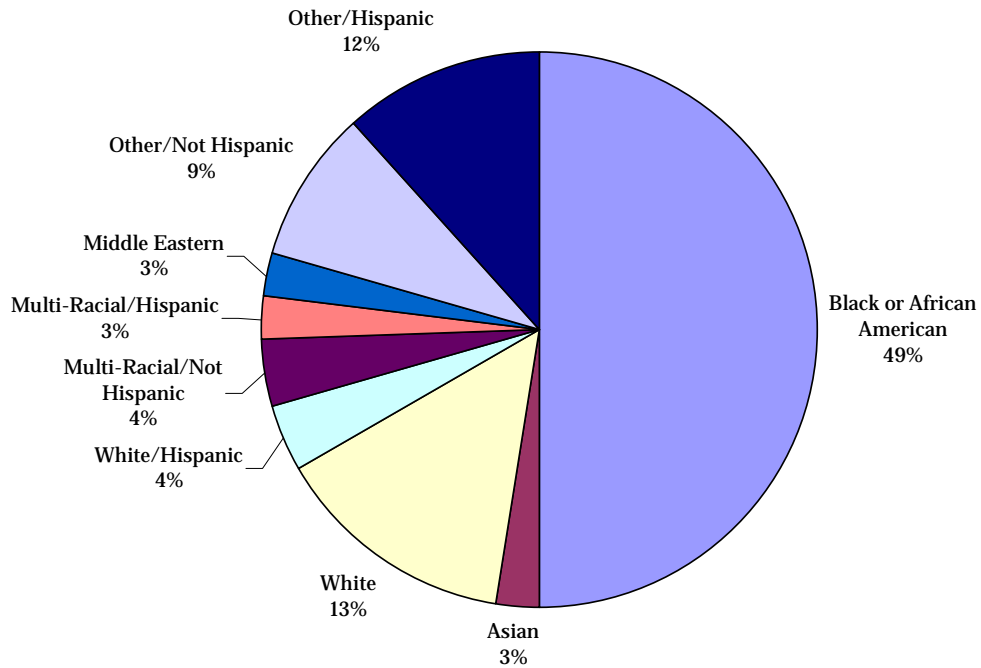
			Not Hispanic or Latino		Hispanic or Latino	
Black or African American	17	50.0%	17	60.7%		0.0%
Asian	2	5.9%	2	7.1%		0.0%
Native American	0	0.0%	0	0.0%		0.0%
Pacific Islander	0	0.0%	0	0.0%		0.0%
White	7	20.6%	7	25.0%		0.0%
Multi-Racial	0	0.0%	0	0.0%		0.0%
Middle Eastern	2	5.9%	2	7.1%		0.0%
Other	6	17.6%	0	0.0%	6	100.0%
Total	34	100.0%	28	100.0%	6	100%



Shelter & Transitional Living Clients Demographics (Individuals)

			Not Hispanic or Latino		Hispanic or Latino	
Black or African American	39	50.0%	39	60.9%	0	0.0%
Asian	2	2.6%	2	3.1%	0	0.0%
Native American	0	0.0%	0	0.0%	0	0.0%
Pacific Islander	0	0.0%	0	0.0%	0	0.0%
White	14	17.9%	11	17.2%	3	21.4%
Multi-Racial	5	6.4%	3	4.7%	2	14.3%
Middle Eastern	2	2.6%	2	3.1%	0	0.0%
Other	16	20.5%	7	10.9%	9	64.3%
Total	78	100.0%	64	100.0%	14	100%

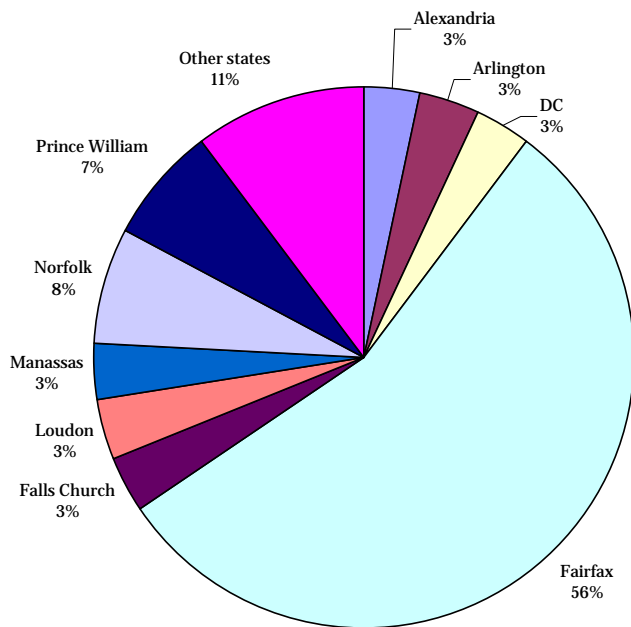
Hispanic	14	17.9%
----------	----	-------



Gender		
Female	62 (28 girls)	79.5%
Male	16	20.5%
Total	78	100.0%

Household by County/City

County / City	
Alexandria	1
Arlington	1
DC	1
Fairfax	16
Falls Church	1
Loudon	1
Manassas	1
Norfolk	2
Prince William	2
Other states	3
Total	29

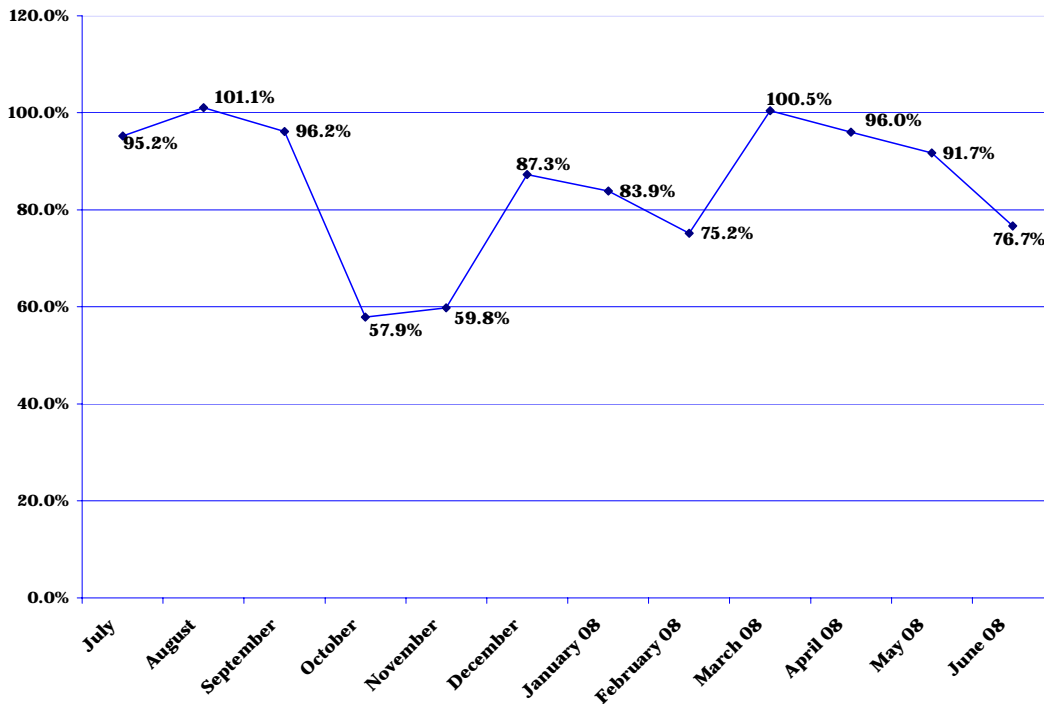


Shelter Stays & Bed Nights

Monthly Shelter Bed Nights and Client Count

Month	Adults	Children	Adult Bed Nights	Child Bed Nights	Total Bed Nights	% of Capacity
July	7	13	217	403	620	95.2%
August	9	16	226	432	658	101.1%
September	11	17	220	386	606	96.2%
October	8	11	154	223	377	57.9%
November	7	8	154	223	377	59.8%
December	8	14	215	353	568	87.3%
January 08	11	17	239	307	546	83.9%
February 08	9	11	220	238	458	75.2%
March 08	11	14	300	354	654	100.5%
April 08	11	13	286	319	605	96.0%
May 08	10	11	268	329	597	91.7%
June 08	9	11	204	279	483	76.7%
			2,703	3,846	6,549	

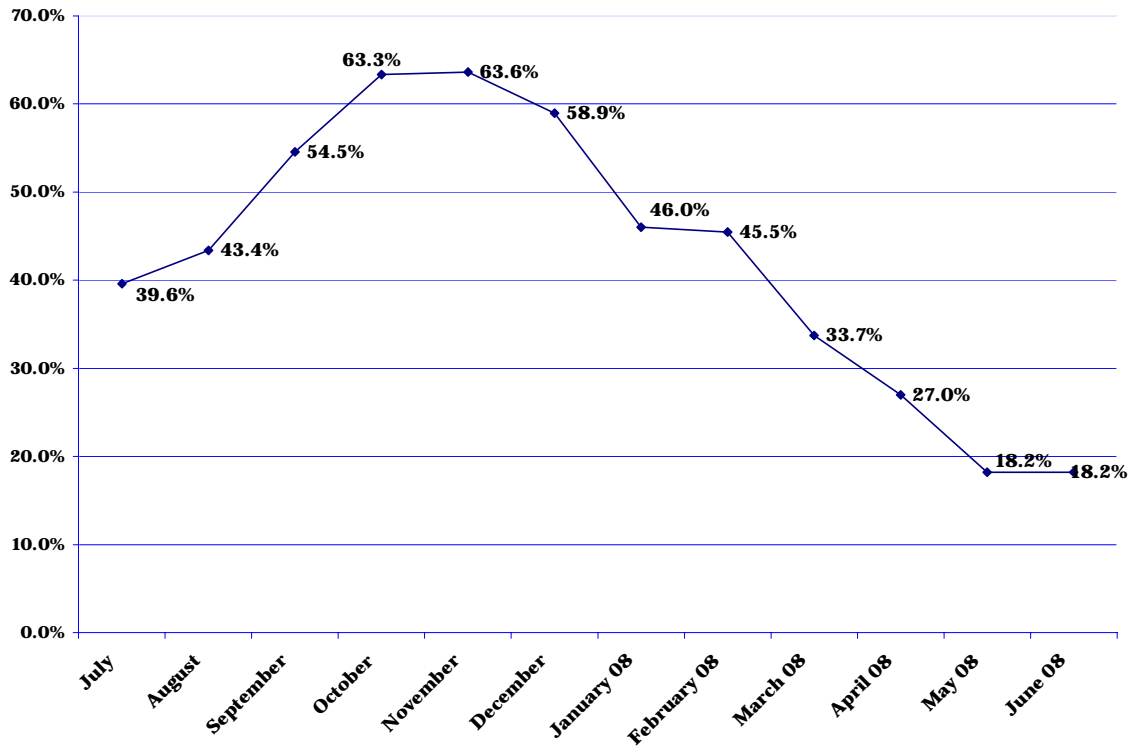
* Based on a daily capacity of 21 beds



Monthly Transitional Living Bed Nights and Client Counts

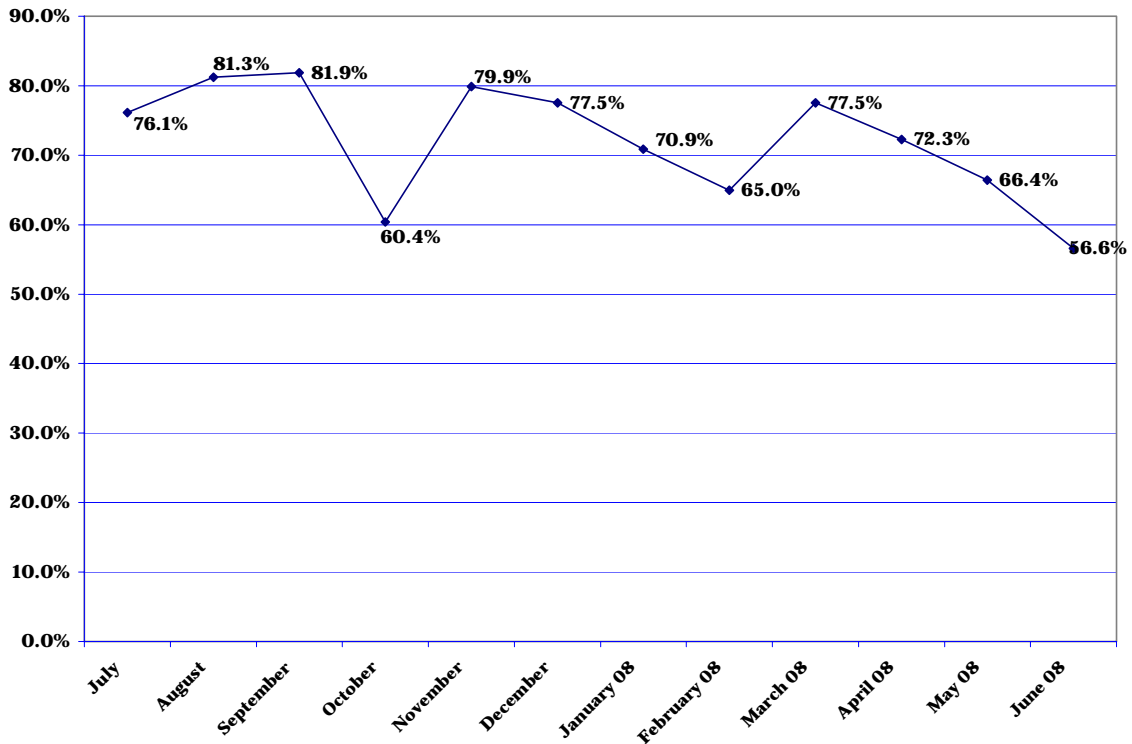
Month	Adults	Children	Adult Bed Nights	Child Bed Nights	Total Bed Nights	% of Capacity
July	4	1	104	31	135	39.6%
August	5	1	117	31	148	43.4%
September	5	1	150	30	180	54.5%
October	7	1	185	31	216	63.3%
November	6	1	180	30	210	63.6%
December	6	1	170	31	201	58.9%
January 08	5	1	126	31	157	46.0%
February 08	5	1	116	29	145	45.5%
March 08	4	1	104	11	115	33.7%
April 08	3	0	89	0	89	27.0%
May 08	2	0	62	0	62	18.2%
June 08	2	0	60	0	60	18.2%
			1,463	2,55	1,718	

* Based on a daily capacity of 11 beds



Monthly Bed Nights and Client Counts Shelter and Transitional Living

Month	Adults	Children	Adult Bed Nights	Child Bed Nights	Total Bed Nights	% of Capacity
July	11	14	321	434	755	76.1%
August	14	18	343	463	806	81.3%
September	16	19	370	416	786	81.9%
October	15	13	323	276	599	60.4%
November	13	9	334	433	767	79.9%
December	14	15	385	384	769	77.5%
January 08	16	18	365	338	703	70.9%
February 08	14	12	336	267	603	65.0%
March 08	15	15	404	365	769	77.5%
April 08	14	13	375	319	694	72.3%
May 08	12	11	330	329	659	66.4%
June 08	11	11	264	279	543	56.6%
			4,158	4,307	8,465	



Departures by Month

	Number of departures	Clients Departed
July '07	1	1
August '07	1	4
Sept. '07	4	11
Oct. '07	4	11
Nov. '07	1	1
Dec. '07	1	1
Jan '08	5	14
Feb '08	0	0
March '08	2	5
April '08	2	4
May '08	3	5
June '08	2	4
Total	26	61

Exit Type	Number of departures
Abandoned Shelter	2
New living arrangement	9
Return to abuser	2
Shelter violation	5
Left for housing opportunity	5
Completed program	3
Total	26

Destination	Number of departures
Home without abuser	2
Home with abuser	1
Friends/relatives	9
Transitional housing program	6
Unknown	4
Rental house/apartment	3
Home subsidized housing	1
Total	26

Transitional Housing Program	Number of Clients Accepted
NOVACO	2
Homestretch	2
Reston Interfaith	1
CRS	1
Safe Places	1
Total	6

Summary

- **265 adults and 310 children received emergency and crisis intervention assistance through our hotline program.**
- **44 intake interviews were made and 23 families entered the program.**
- 20 shelter and 5 transitional living clients were in the program at the beginning of the fiscal year.
- 3 clients moved from the shelter to the transitional living program
- 78 clients (44 children and 33 adults) received shelter and transitional living services.
- 19 adults and 24 children participated in life skills activities.
- 20 adults and 27 children received group counseling.
- 15 adults and 6 children received individual counseling.
- 6 clients were accepted in a transitional housing program.