

Bethany House of Northern Virginia, Inc
Demographics Report
FY 2008-2009

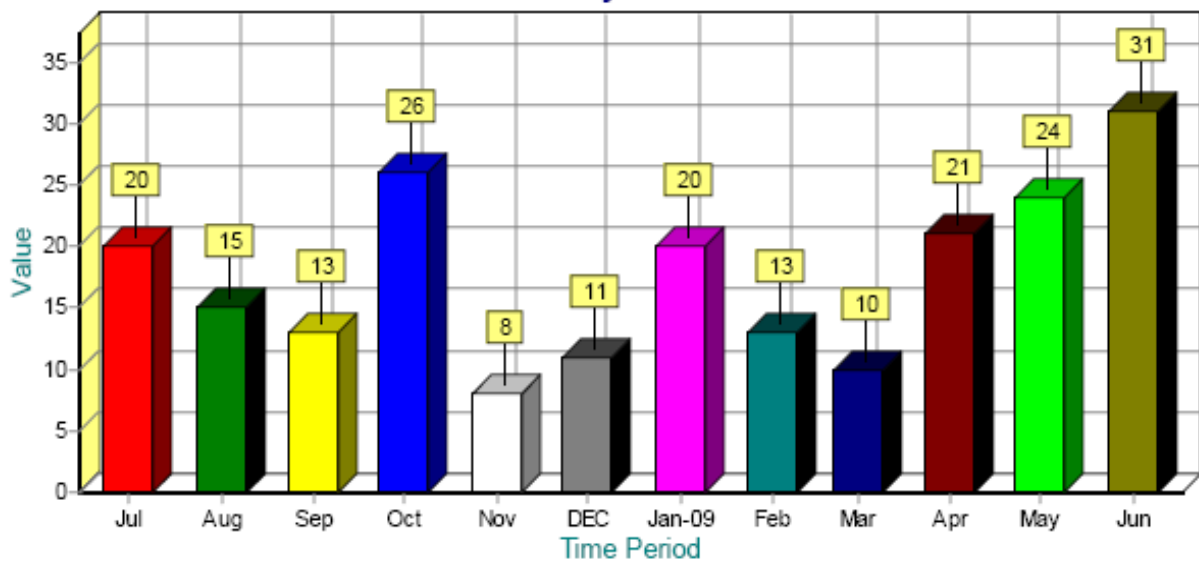
Contents

- Helpline
- Intake
- Shelter and Transitional Housing
- Bed Nights (Shelter and Transitional)
- Departures
- Summary

Hotline Calls by Month

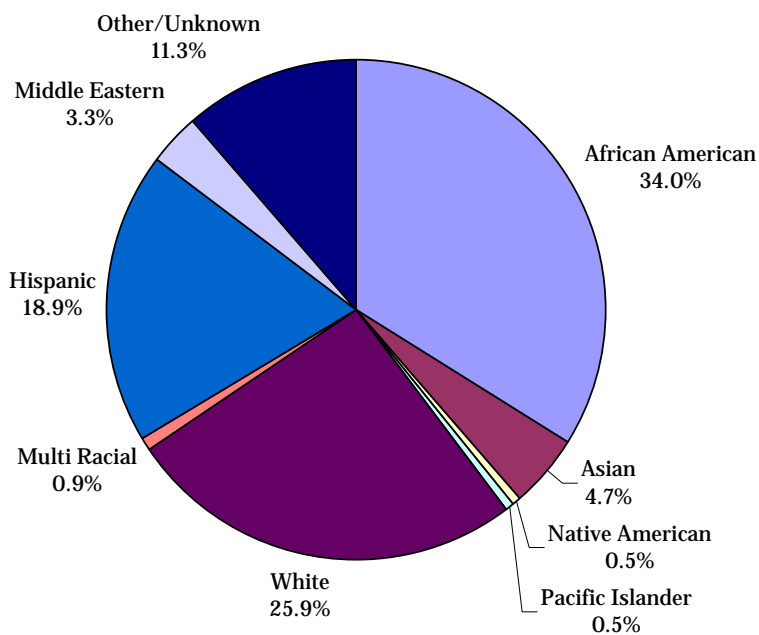
Month	# of calls	Scheduled for Intake Interviews
July	20	2
August	15	3
September	13	2
October	26	7
November	8	3
December	11	0
January	20	3
February	13	1
March	10	1
April	21	2
May	24	4
June	31	5
Total	212	33

Count by Month



Race and Ethnicity (Households)

African American	72
Asian	10
Native American	1
Pacific Islander	1
White	55
Multi Racial	2
Hispanic	40
Middle Eastern	7
Other	24
Total	212



Total Helpline Clients	
Adults	212
Children	272
Total	484

Age		%
Under 18	1	0.7%
18-19	7	4.7%
20-29	47	31.5%
30-39	47	31.5%
40-49	35	23.5%
50-59	10	6.7%
60 and over	2	1.3%
Total	149	100.0%

Average age: 34
272 children reported as dependents

Marital Status		%
Married	40	24.1%
Single	86	51.8%
Divorce	19	11.4%
Separated	21	12.7%

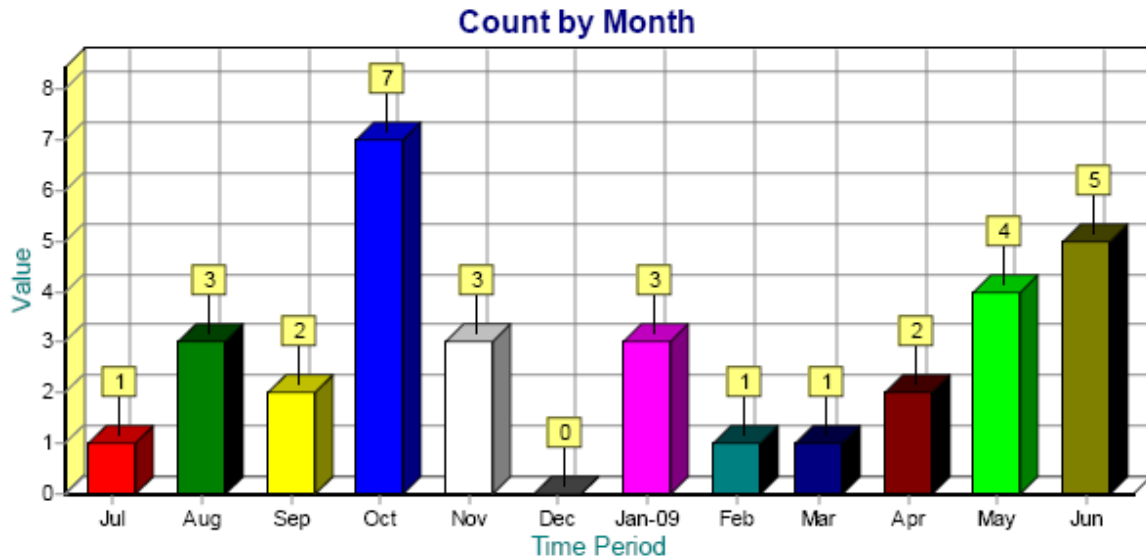
% based on 166 records where marital status was entered

County	
Alexandria	9
Arlington	6
DC	6
Fairfax	91
Loudoun	4
Montgomery	1
Prince George	5
Prince William	16
Other	21
	159

Based on 159 records where information was provided

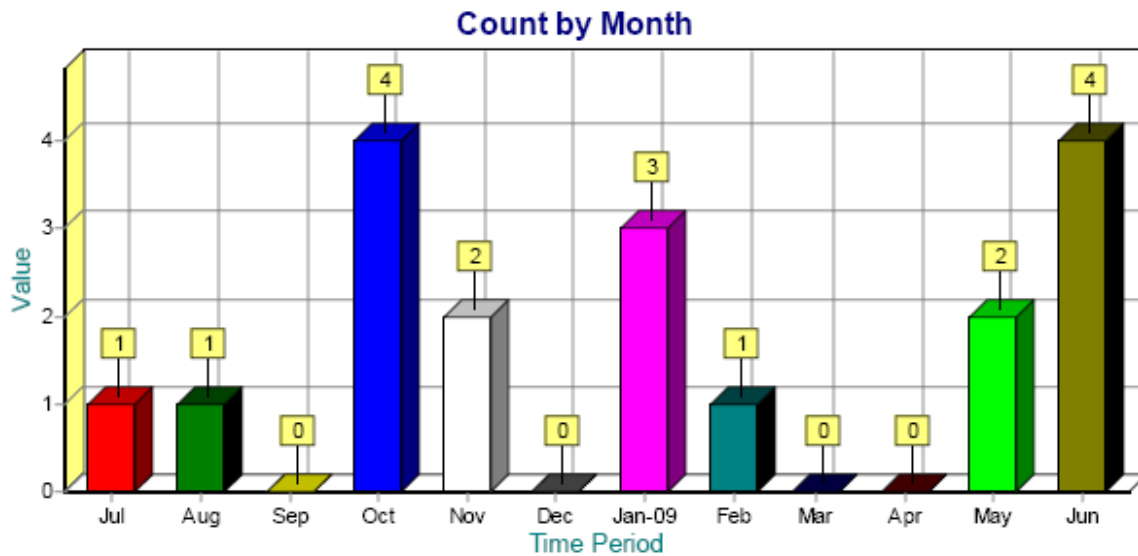
Referrals provided	
Other DV Shelters	41
Homeless Shelter	49
Our DV Shelter	44
Financial Emergency services	4
Emergency food	3
Emergency clothing	4
Legal services	11
Maternity	4
Mental health/counseling	3
Outreach counseling	2
Protection order	2
Support group	2
Safety plan	1
Law enforcement	7
Other services	21

Intake Interviews by Month



A total of 32 intake interviews were performed during last fiscal year.

Shelter Intakes (households) by Month



- 18 interviews (56% of interviews) resulted in shelter intakes; one new client had her interview during FY 07-08.

			Not Hispanic or Latino		Hispanic or Latino	
Black or African American	11	36.4%	11	47.8%	0	0.0%
Asian	3	9.1%	3	13.0%	0	0.0%
Native American	0	0.0%	0	0.0%	0	0.0%
Pacific Islander	0	0.0%	0	0.0%	0	0.0%
White	8	24.2%	6	26.1%	2	22.2%
Multi-Racial	0	0.0%	0	0.0%	0	0.0%
Middle Eastern	3	9.1%	3	13.0%	0	0.0%
Other	7	21.2%	0	0.0%	7	77.8%
Unknown	0	0.0%	0	0.0%	0	0.0%
Total	32	100.0%	23	100.0%	9	100%

Shelter and Transitional Housing

On-going clients - from previous FY 07-08

Shelter Clients	
Adults	6
Children	9
Total	15

Transitional Housing	
Adults	2
Child	0
Total	2

New Clients - FY 08-09

Shelter Clients	
Adults	18
Children	26
Total	44

Transitional Housing	
Adults	2
Child	3
Total	5

- 2 Clients moved from Shelter to Transitional living during this fiscal year.

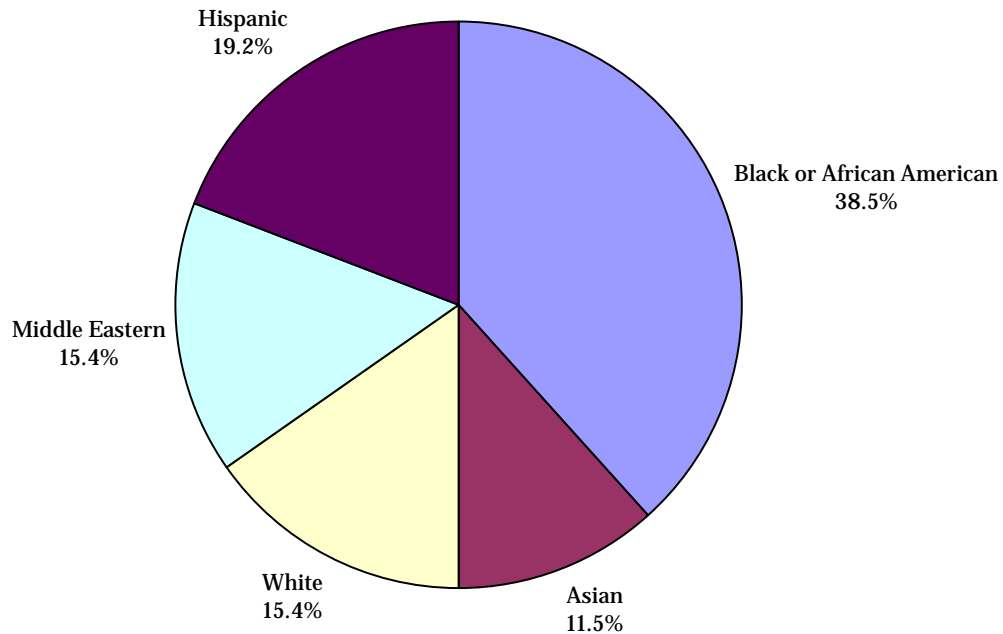
Total clients served during FY 08-09

Shelter Clients	
Adults	24
Children	35
Total	59

Transitional Housing	
Adults	4
Child	3
Total	7

Shelter & Transitional Living Clients Demographics (Households)

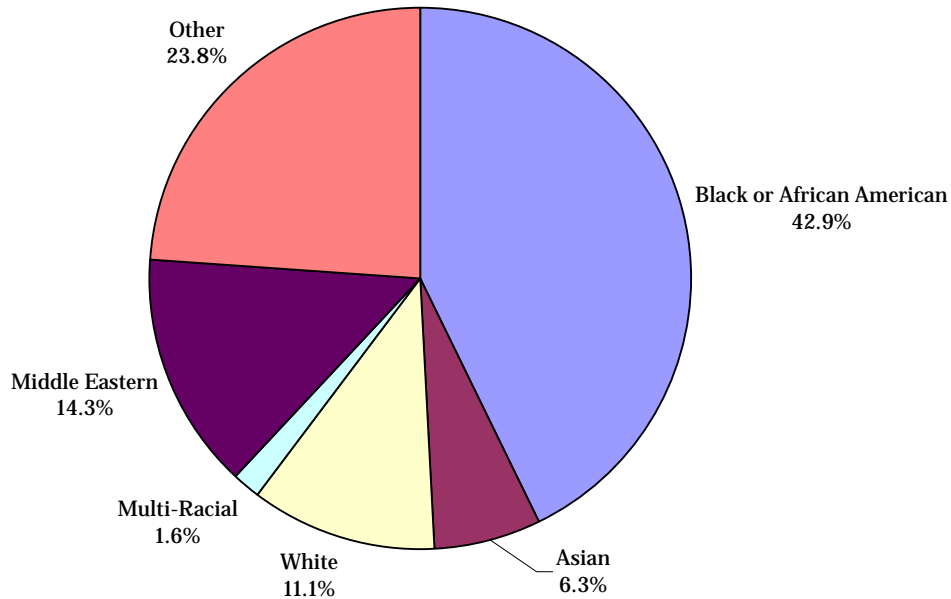
			Not Hispanic or Latino		Hispanic or Latino	
Black or African American	38.5%	10	10	47.6%	0	0.0%
Asian	11.5%	3	3	14.3%	0	0.0%
Native American	0.0%	0	0	0.0%	0	0.0%
Pacific Islander	0.0%	0	0	0.0%	0	0.0%
White	15.4%	4	4	19.0%	0	0.0%
Multi-Racial	0.0%	0	0	0.0%	0	0.0%
Middle Eastern	15.4%	4	4	19.0%	0	0.0%
Other	19.2%	5	0	0.0%	5	100.0%
Total	100.0%	26	21	100.0%	5	100%



Shelter & Transitional Living Clients Demographics (Individuals)

			Not Hispanic or Latino		Hispanic or Latino	
Black or African American	42.9%	27	27	57.4%	0	0.0%
Asian	6.3%	4	4	8.5%	0	0.0%
Native American	0.0%	0	0	0.0%	0	0.0%
Pacific Islander	0.0%	0	0	0.0%	0	0.0%
White	11.1%	7	7	14.9%	0	0.0%
Multi-Racial	1.6%	1	0	0.0%	1	6.3%
Middle Eastern	14.3%	9	9	19.1%	0	0.0%
Other	23.8%	15	0	0.0%	15	93.8%
Total	100.0%	63	47	100.0%	16	100%

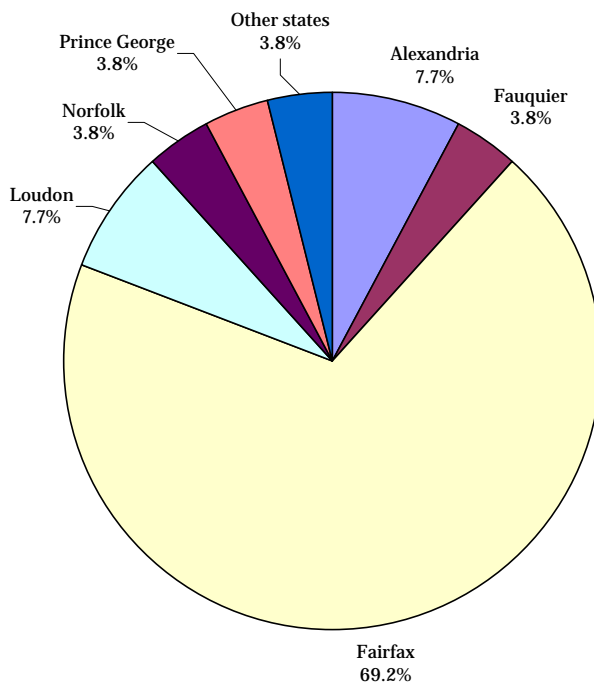
Hispanic	16	17.9%
----------	----	-------



Gender		
Female	41	60.1%
Male	22	34.9%
Total	63	100.0%

Households Totals by County/City

County / City	
Alexandria	2
Fauquier	1
Fairfax	18
Loudon	2
Norfolk	1
Prince George	1
Other states	1
Total	26



Shelter Stays & Bed Nights

Monthly Shelter Bed Nights and Client Count

Month	Adults	Children	Adult Bed Nights	Child Bed Nights	Total Bed Nights	% of Capacity
July	7	9	145	229	374	52.5%
August	5	8	152	242	394	55.3%
September	5	8	113	192	305	44.2%
October	7	10	167	252	419	58.8%
November	8	16	191	333	524	75.9%
December	7	13	217	403	620	87.0%
January 09	10	16	226	295	521	73.1%
February 09	9	11	229	285	514	79.8%
March 09	9	11	279	341	620	87.0%
April 09	9	12	250	343	593	85.9%
May 09	10	12	216	298	514	72.1%
June 09	11	16	246	313	559	81.0%
Total	24	35	2431	3526	5957	

* Based on a daily capacity of 23 beds

Monthly Transitional Living Bed Nights and Client Counts

Month	Adults	Children	Adult Bed Nights	Child Bed Nights	Total Bed Nights	% of Capacity
July	3	3	90	78	168	77.4%
August	3	3	93	93	186	85.7%
September	3	3	90	90	180	85.7%
October	3	3	86	93	179	82.5%
November	3	3	90	90	180	85.7%
December	3	3	93	93	186	85.7%
January 08	3	3	93	93	186	85.7%
February 08	3	3	84	84	168	85.7%
March 08	3	3	93	93	186	85.7%
April 08	3	2	90	90	180	85.7%
May 08	3	3	93	93	186	85.7%
June 08	3	3	90	90	180	85.7%
Total	3	3	1085	1080	2165	

* Based on a daily capacity of 7 beds

**Monthly Bed Nights and Client Counts
Shelter and Transitional Living**

Month	Adults	Children	Adult Bed Nights	Child Bed Nights	Total Bed Nights	% of Capacity
July	9	11	235	307	542	58.3%
August	14	18	245	335	580	62.4%
September	16	19	203	282	485	53.9%
October	15	13	253	345	598	64.3%
November	13	9	281	423	704	78.2%
December	14	15	310	496	806	86.7%
January 09	16	18	319	388	707	76.0%
February 09	14	12	313	369	682	81.2%
March 09	15	15	372	434	806	86.7%
April 09	14	13	340	433	773	85.9%
May 09	12	11	309	391	700	75.3%
June 09	11	11	336	403	739	82.1%
			3516	4606	8122	

Departures by Month

	Departures (households)	Clients Departed
July '08	3	6
August '08	0	0
Sept. '08	2	5
Oct. '08	1	1
Nov. '08	1	4
Dec. '08	0	0
Jan '09	2	6
Feb '09	0	0
March '09	0	0
April '09	2	5
May '09	2	5
June '09	1	3
Total	14	35

Exit Type	Number of departures
New living arrangement	3
Shelter violation	2
Left for housing opportunity	4
Completed program	4
Program unable to meet needs	1
Total	14

Destination	Number of departures
Friends/relatives	3
Transitional housing program	7
Unknown	2
Rental house/apartment	1
Psychiatric hospital	1
Total	14

Transitional Housing Program	Number of Clients Accepted
My Sister's Place	1
NOVACO	2
Journeys	1
Homestretch	1
UCM	1
Total	7

Summary

- 212 adults and 272 children received emergency and crisis intervention assistance through our hotline program.
- 32 intake interviews were made and 18 families entered the program.
- Only 6 head of households/adults were employed when they came to Bethany House.
- 17 shelter and 2 transitional living clients were in the program at the beginning of the fiscal year.
- 2 clients moved from shelter to the transitional living program
- 63 clients (37 children and 26 adults) received shelter and transitional living services.
- 15 adults and 22 children participated in life skills activities.
- 20 adults and 27 children received group counseling.
- 20 adults received individual counseling.
- 7 clients were accepted in a transitional housing program.
- 11 households (out of 14 exiting the program) moved to a stable housing arrangement.
- 2 donated vehicles were transferred to two clients.
- 2 clients received assistance for car repairs and other auto expenses.